

Progress Central Middle School

Week of August 16, 2019

Dear Colleagues,

WHAT A WEEK!!!!!! This has been a very exciting week with loads of progress taking place and numerous opportunities for improvement presenting themselves at the last minute. It would not even be fun without a few surprises. We are having a ball!!

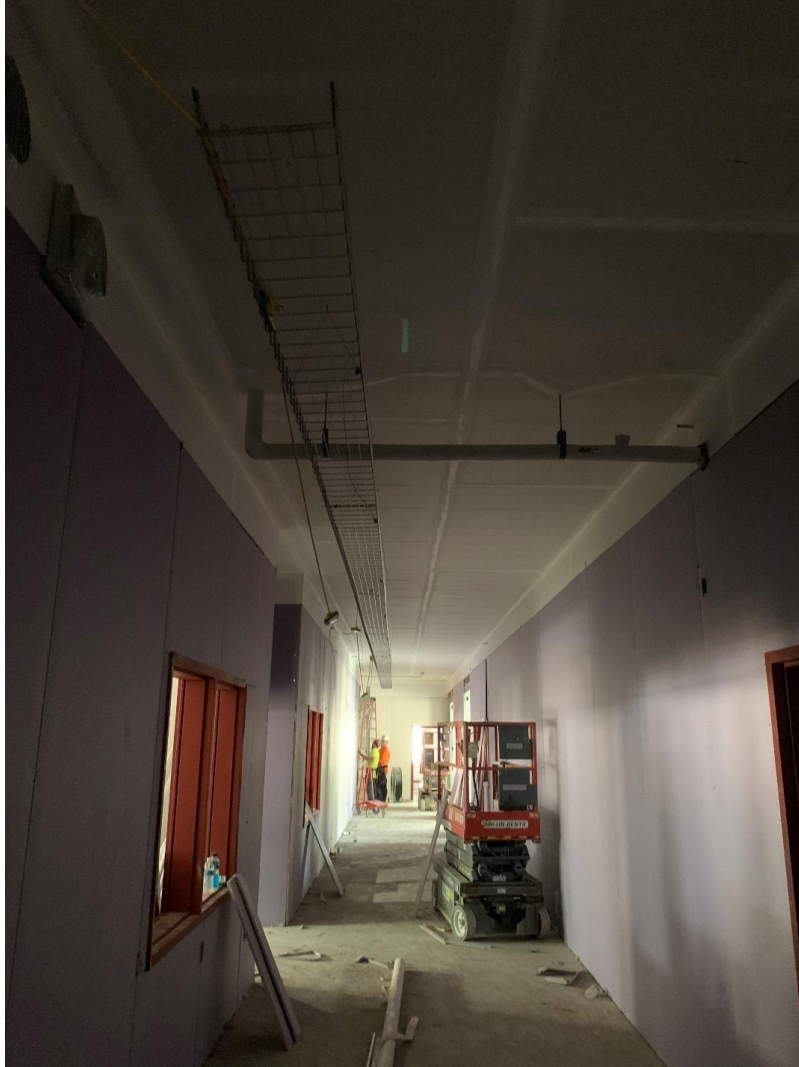
This week's is going to start positive showing work in the new construction and some general overviews of the renovation. It is going to turn a little sour with opportunities for improvement that are some items we did not notice their potential to be an eyesore during the planning stage. That will be followed with some items in which the subcontractor failed to read all the specifications and some areas we need to make some decision on and some areas where the cleaning contractor fell down and stabbed himself with the mop.

Great progress is noticeable throughout the project.



Plumbers continue running water lines. These lines are in the hallway area near the front entrance.

The front hallway is really taking shape. Sheetrock is going up and being taped and finished. The fan in the background is blowing down the eighth grade hallway.



You notice a difference in color below the top few inches of vertical wall. I THINK the darker color is a base sheet of sheetrock to be followed by a top sheet of sheetrock since this is a fire rated hallway. That is my story for now until I get a different explanation from someone who has a better answer.

Sheetrock finishing looks simple just watching someone else do it but it takes on a different angle when I try it. I noticed more female help with the sheetrock taping and finishing process. My eyes really opened when I saw a man walking through carrying stilts he was going to use to finish the high spots. I always wondered how you get those things on, stand up and walk around without breaking your neck. Now you will know too.

This man had already stacked a stack of mud buckets and placed his finishing tools on top of the buckets. He had another bucket sitting beside another wall. This was all taking place in the main front entrance. He stands on the first bucket with his stilts in front of him. He places his hands on top of the stilts



and jumps on top of the stilts.



It looks like taking candy from a baby to me! He then proceeds to strap his feet and knees to the stilts which is no problem at all if you are not old and stiff like the most of us.



Then you simply walk over to your stack of six buckets with your tools on top



and proceed to collect your tools and get to work.



wire I have seen them running.

Moving over to the renovation area I see the normal effort by crafts people doing their best to take pride and do a good job. This man is removing tile at the transition between the sixth and seventh grade wings.



He is using the center lock hole for his start point on the new floor and is removing some of the old tile by applying heat then prying the tile up with his putty knife.

A leveling material was applied to the old ceramic floor to level it for the application of the VCT flooring. (Vinyl Tile glued down) This helps to keep imperfections from telegraphing through the new tile.

Some of the project simply involves repairs to existing structure showing it's age. The plate is the lintel supporting the brick above the southeast door to the

seventh grade wing. One brick has actually fallen from the wall.



The right side of the same door had some deficiencies these workers are removing to replace the brick and get it as it should be.



Some very precise work has been taking place the last couple of weeks on the east side of the school starting at the side of US-158 and running on behind the school. This transition box is for the sewer line running from behind the school to the county waste treatment lines on the north side of US-158.



These lines have a 0.41% grade, which, according to my math, is approximately one half inch drop per ten feet of run. This is accomplished by using a laser you see inserted into the end of the pipe. The laser projects a beam to a target installed in the other end of the pipe to let the installers know when they have that other end at the proper elevation.



The man on the transit is double checking the elevation and the location of the pipe left and right to keep it perfectly straight. The pipe is bedded in #57 stone and initially covered with #57 stone as the dirt removed from the hole is too lumpy to get a good bed for the pipe.

I have been telling you backwards about drainage at the front of the building. From a point somewhere behind the motor grader and on to the east the water from the drive will drain to the front swell.



The water from behind the motor grader will drain from the left edge of the existing asphalt in this picture to the north on the right side and to the south on the left side. It is now quite noticeable when standing at the new entrance and looking across the new asphalt not shown in this photo.

The new TPO roof is completed other than some debris removal.



The gutters are installed and this is how the finished product looks from the top



side.

Now we need to talk about areas for improvement. This is the janitor closet on the seventh grade hallway. The pipes are dead and the large hole is where there had been a sump pump. The pipes sticking up present trip hazards to cause a Workmen's Comp claim we do not need. The open sump hole has equally negative potential. Dr. Williams and I have asked the pipe be removed and the sump hole filled, capped with concrete and the VCT floor repaired to remove all those hazards.

That same room has a very old cast iron janitor's sink.



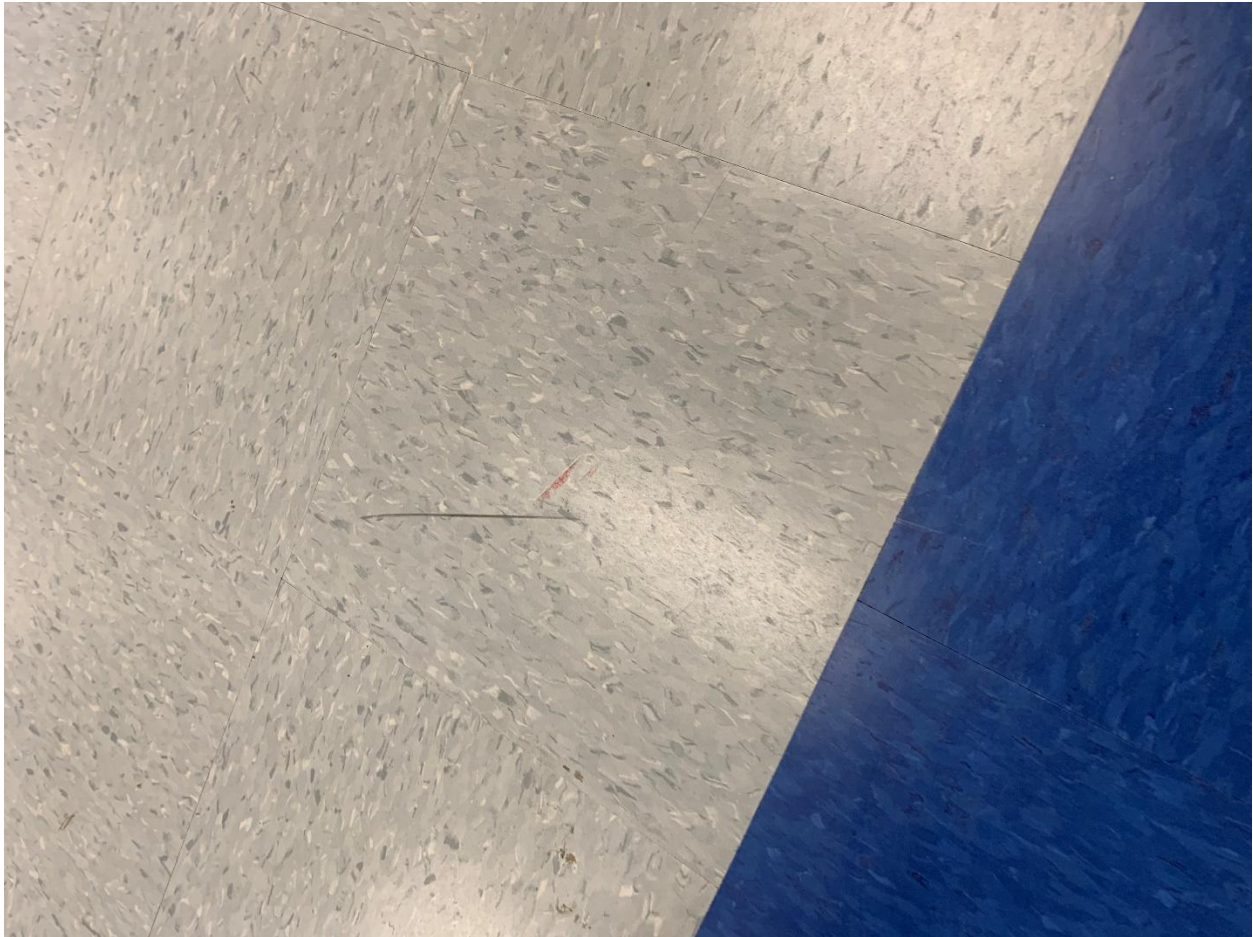
There is quite a bit I want you to notice in this picture. This room was “cleaned” by the cleaning crew yesterday. I simply cannot believe anyone got a rag close to that sink. If you look really closely, there is a rag across the faucets. The cleaning of this sink is a fair representation of the job the cleaning crew did in the rest of the building. Before moving on to pictures of these and other issues, I asked Mr. Brian Plyler to have the cleaning crew come back this weekend and get the cleaning done right. I also requested that he have the painters clean the outside of the sink and repaint it. It is still very serviceable and much more sturdy than anything we can buy today.

I went to the school early this morning to walk through with a critical eye looking for potential hazards and areas for improvement. The first thing I noticed is the BARD units.



They are neat, very quiet and, I think, a good choice to get mechanical off the roof. In the area between the window and the unit there is a space from the top of the window ledge and up about four inches that is open all the way across. Starting about eight inches above the center window frame there is another opening running all the way across. I discussed the issue with the window installer working in that classroom and he indicated this condition allows little hands to come into contact with some sharp metal between the unit and the window. I requested him to give us a price to install sheet metal to make one solid closure from top to bottom on each side of each BARD unit.

Floors and ledges were given a lick and a promise with workers looking to get home.



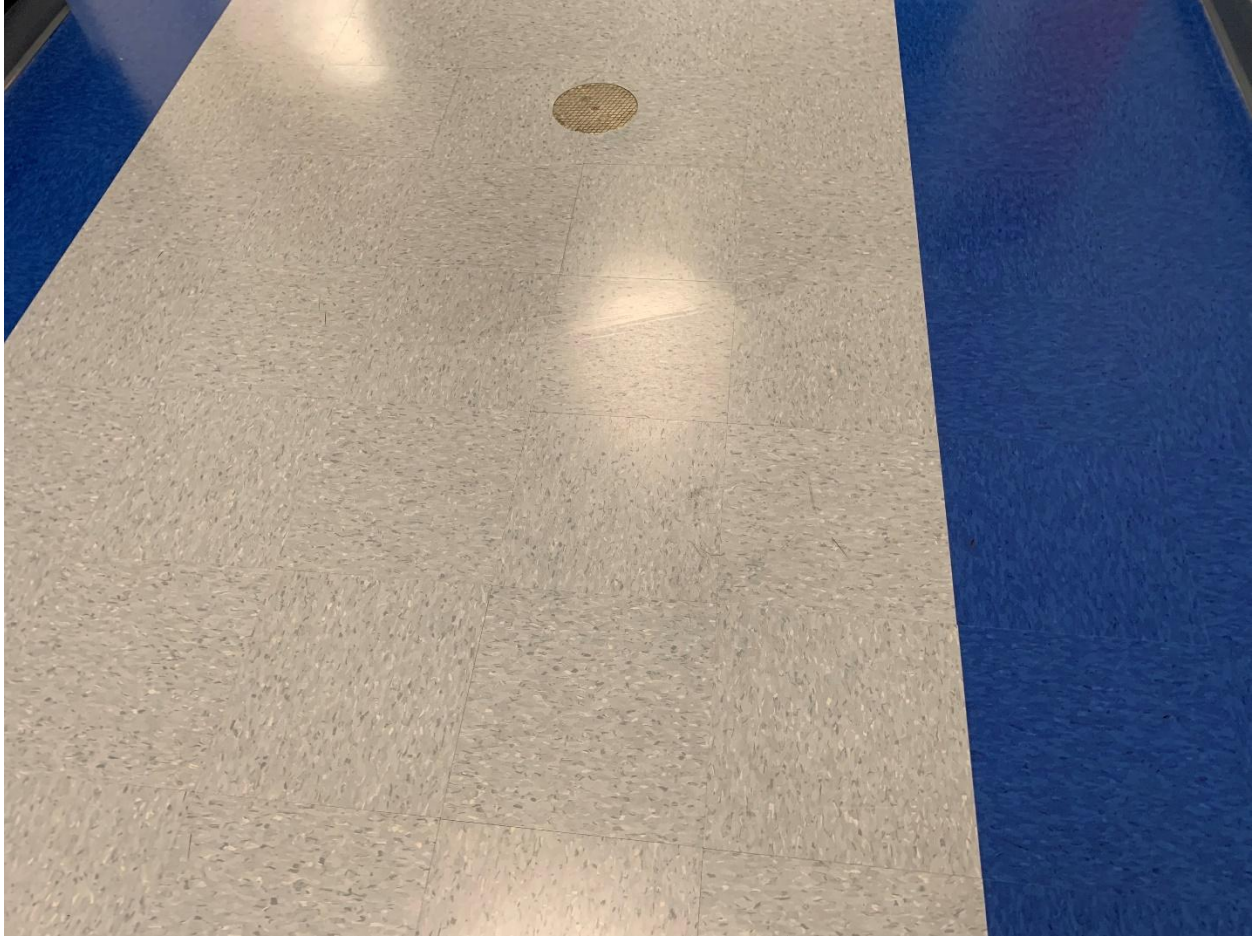
Notice the two marks close to the center of the above photo.

This is a column of some sort not removed during the remodel. I asked Mr. Tom McLaren, the superintendent of the remodel, to have these cleaned and painted. Tom was not on site this morning as he was suffering with an ear infection. The column



needing painting is one of four.

The cleaning crew was consistent. Consistently bad!! This is a section of the hallway. Notice the shiny spot that is a reflection of an overhead light. In the center of the shiny spot, notice how half is polished and half is not.



This is one of the better spots of imperfections in cleaning. They were to get a head start on Friday, then complete their work today and tomorrow. They will be back tomorrow morning and I plan to be there as well as will some of the Chesson supervision.

Now we will look at issues on a room to room basis starting with room 229. This floor tile simply does not fit.



A spot on the wall for a painter to give a little TLC.



Some dust failed to jump on the rag. Notice I removed my boots at the door to keep from tracking up the floor.



More dirt on a window ledge!



The dirt is very easy to see.



More dirt from a window ledge.



Moving on to Room 223 we see it really looks nice.



UNTIL



We move the desk next to the counter. The specifications called for the surface heights to be 33 inches. The desk is 33 inches while the countertop is 30 inches. To the right of this picture the cabinet becomes a single tall cabinet at the end next to the windows. The cabinets are clearly not made per specifications. The specifications were conveyed to the contractor before they started building the cabinets. We have three options on how to handle this.

Option 1 is that we accept the cabinets as they are.

Option 2 is that we require the contractor to rebuild the cabinets per the specs.

Option 3 is that we have the contractor raise the lower cabinets by using a spacer under the cabinets 3 inches taller than the spacer under them now and make new doors 3 inches longer than the doors now on the cabinets which will make the bottom of all the doors be the same elevation above the floor.

My opinion is that the space the extra 3 inches will give us inside the cabinets is not going to make a difference at all in the long run. The top of the work surface

will make a difference and should be corrected. The cabinets will not look right if the bottom of the doors are not all the same. I would appreciate your feedback on this.

I am not sure what happened here but it appears was dripped on the floor and left.



Issues with cleaning continued as evidenced by my dirty fingers.



The dirt came from the very visible top of a control box on the wall.



It does not require a lot of degree work to figure out the top of that box has had no TLC in a long time. They got around to scraping the windows



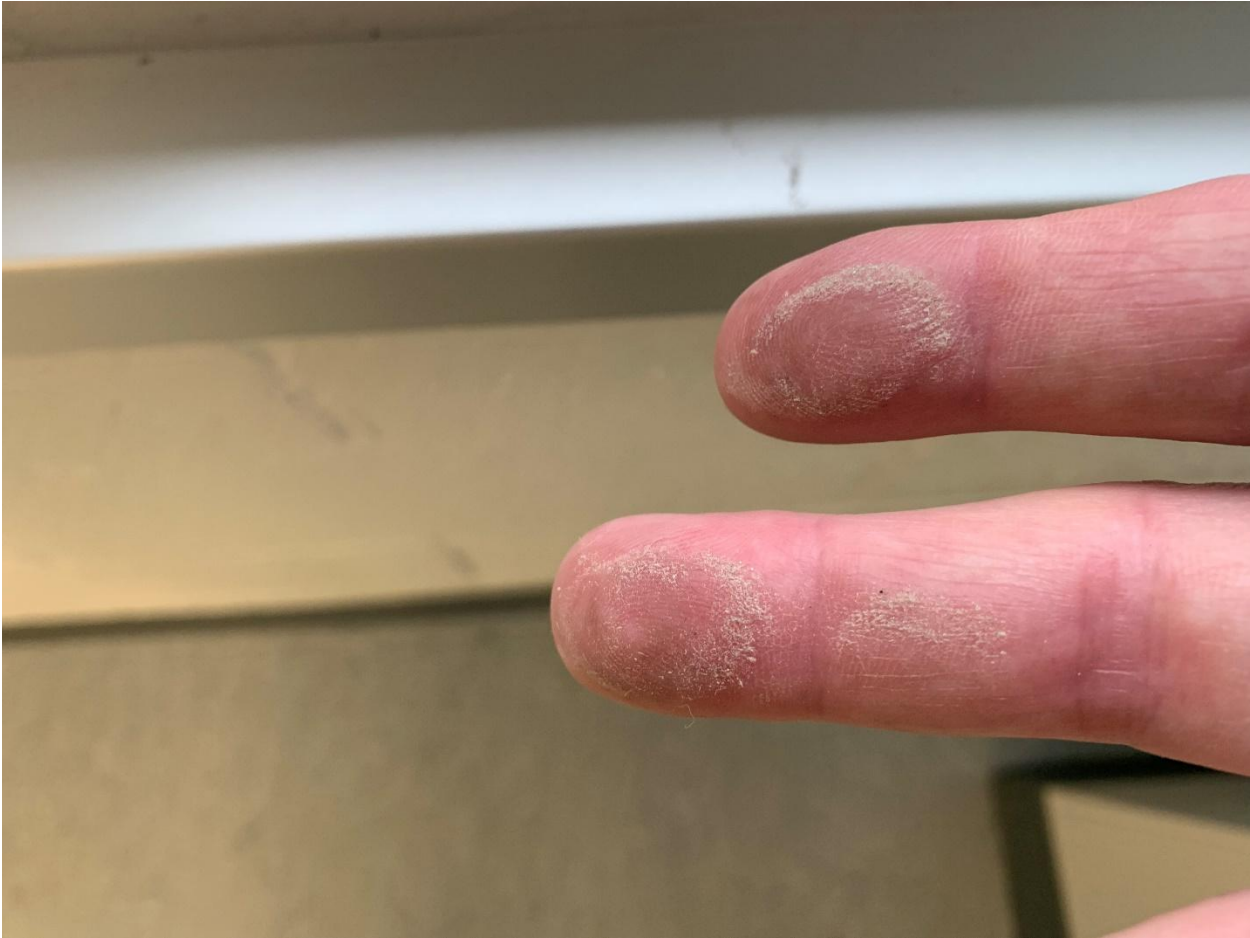
but they forgot to clean up their mess and get rid of the razor blade.

This is a small spot the painters missed.



Room 225 looks nice from the door, with the exception of the black stuff on the vertical rail for the window. That stuff is for the window folks to attach a cover over that whole rail to hide an imperfection. I did find there was a lack of

attention to dust removal in the window ledge.



There was also a lack of attention on top of the disconnect for the BARD unit.



And on top of the thermostat!



Walking past the lockers, it jumps out at you the lockers really need an upgrade of some sort. They have served well but have become an eyesore next to all the

fresh paint.



We have options.

Option 1 We leave them as they are.

Option 2 We purchase new lockers and install them ASAP.

Option 3 We get a cost for adding the appropriate number of lockers to the order for the eighth grade wing expecting them to be less expensive than making as separate order for each wing.

Option 4 We get a price from a vendor Mr. Baker is familiar with to have the lockers removed, refurbished, repainted and returned.

I asked Mr. Daniel Plyler to get costs for separate orders and combined orders and to get a cost to refurbish the existing lockers. There are a good number of lockers where it is evident at least one hinge has come loose from the door or the cabinet. We have to do something.

There are other classrooms with similar issues to those noted above as well as poor workmanship on cleaning and waxing the floors. We will make every effort to see those issues properly addressed tomorrow.

Dr. Williams, Mr. Greene and I will walk through the renovation Monday morning with representatives from A R Chesson to identify areas for improvement and get them addressed as quickly as possible. We do not anticipate anything delaying the start of activities at Central during the coming week.

Ending on positive notes are two pictures of the front of the school taken this morning.





We will be standing tall Monday morning.

As always, thank you for your care, your support and your understanding. I am extremely well pleased with the work we have seen done this summer and will be even more pleased when we see that eighth grade wing in use as well.

Ray